



Elite
Health Care Seating

Table of Contents

MISSION STATEMENT & PROPOSAL 3

FEATURES & POINTS OF EMPHASIS 4 - 6

UPHOLSTERY MATERIALS 8 - 11

CONTACT 12



P: 305.477.7900
F: 305.477.9372
E: shorwitz@maincusa.com

Mission Statement & Proposal

Elite Health Care Seating's® patented unique sleeper chair offers a frame construction that will last through time, allows for overall comfort and should be streamlined throughout the health care systems.

A hospital stay can be scary and stressful for the patient and a visitor plays an important role in the well-being of patients in a hospital. Comfort and care toward the visitor is just as vital as patient care so there is a need to strive and make improvements for the patient as well as their loved ones.

Patients and visitors are receiving better accommodations than in the past and Elite Health Care Seating® would like to improve them even more. Comfort is a priority when in a hospital and a part of that is providing guests with comfortable places to wait and stay.

Objectives

Elite Health Care Seating® will develop as well as implement seating throughout the health care systems. The patented design will save on cost through longevity.

Our goal

Overall improvement, longevity and comfort in sleeper chairs for patients and family.

Elite Health Care Seating's® patented sleeper chair will prove the test of time through design and save healthcare systems from replacing furniture in a period of time that has proven to be costly.

Target

Healthcare facilities for inpatient care.



P: 305.477.7900

F: 305.477.9372

E: shorwitz@maincusa.com

Features & Points of Emphasis

MECHANISM: Consists of a patented unique sleeper mechanism featuring simple and durable pullout mechanism. There are no bars, no spring and no sagging, but rather a square tubular frame construction.

CONSTRUCTION: The sleeper chair is constructed in such a way that the entire unit can be taken apart for easy repair and replacement of any damaged upholstery selections thereby eliminating down time.

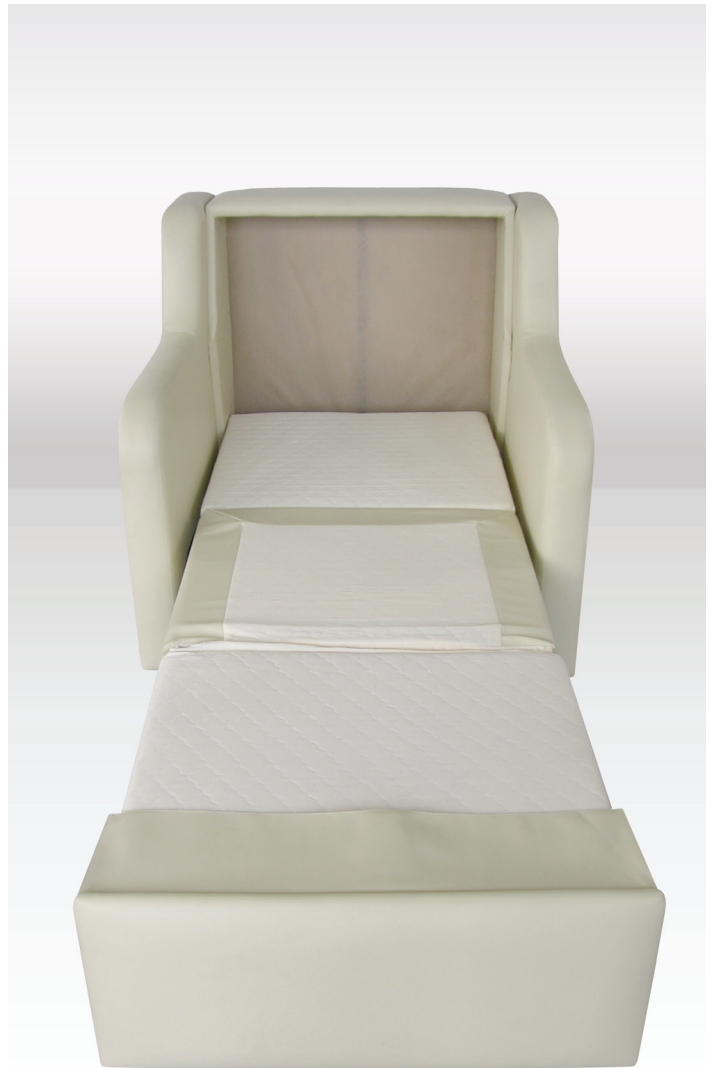


Features & Points of Emphasis *continued...*

MATTRESS: 3" of plush high density foam. Mattress is surrounded with fully replaceable fire retardant concealed zipper cover. Standard flat sheets can be used with this mattress.

MATTRESS OPTION: Available in memory foam.

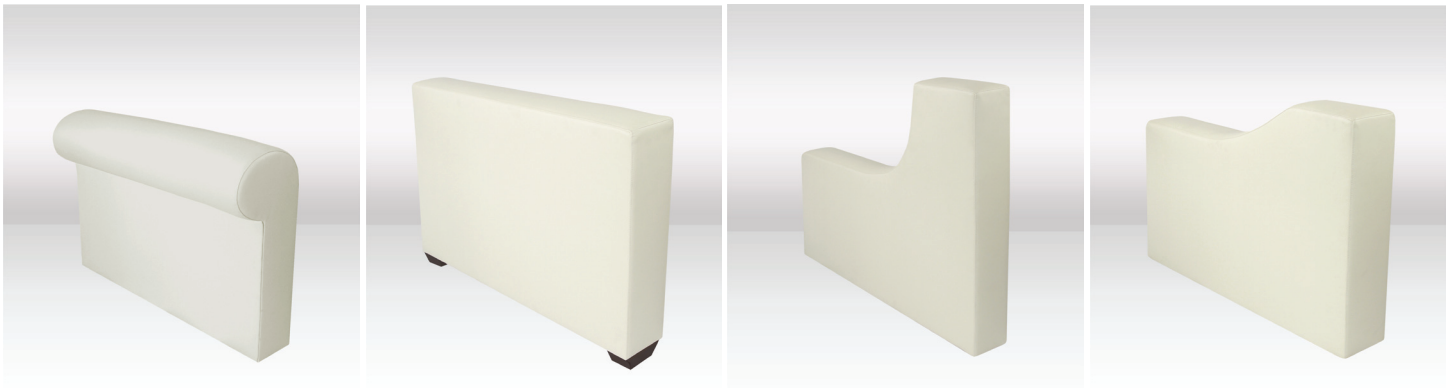
SLEEP SIZE: The sleeping area of the bed is 30" wide X 80" long.



Features & Points of Emphasis *continued...*

ARM STYLES: There are 4 different arm styles a) Chelsea, b) Zoe, c) Ella d) Shayna

- Effortless, light weight, easy to operate bed mechanism
- All square tube metal mechanism
- 100% Maintenance free
- 10 year warranty on the bed mechanism
- Zero wall clearance required. 85 3/4" total open unit dimension.
- Mattress 3" thick high grade fire retardant foam.
- NO bars, NO springs, NO sagging
- Fully removable arms
- 4 Different arms styles.





Elite
Health Care Seating

P: 305.477.7900

F: 305.477.9372

E: shorwitz@maincusa.com

Upholstery Materials:

Specifications for ESPRIT, SAVANNA, SOLITAIRE

Applications: Hospitality, Healthcare

Backing: Polyester / Rayon Knit

Performance Specifications

Abrasion: Resistance: 250,000 + Double Rubs

Cold Crack: -20°F

Ultra Violet Resistance to 500 Hours

Bacterial Resistance per AATCC 147

Mildew Resistance per ASTM G21

Sulfide Stain Resistance

Oil Resistant

Heat Sealable

Flammability Requirements

California Fire Code Technical Bulletin No. 117, Section E

UFAC Class 1

BIFMA

NFPA 260

MVSS 302

Boston Fire Department Code Test BFD IX-1

Port Authority of New York / New Jersey

IMO A.652(16)8.2

Federal Specification A-A-2950

May Comply with California 133 when Tested with Suitable Components



P: 305.477.7900

F: 305.477.9372

E: shorwitz@maincusa.com

Upholstery Materials: *continued ...*

Specifications for ESPRIT, SAVANNA, SOLITAIRE

Care & Cleaning Guide

Prompt cleaning is always recommended. Recommended cleaning steps are listed by type of stain. For best results follow cleaning steps in order.

STEP 1:

Mild soap and water, then rinse with fresh water and wipe dry with a clean cloth.

STEP 2:

Wipe affected area with a soft cloth or soft bristle brush using a non-abrasive cleaner, for example Formula 409 or Fantastik. Rinse with fresh water and wipe dry.

STEP 3:

10% solution of household bleach and water. Rinse with fresh water and wipe dry.

STEP 4:

25% solution of alcohol and water. Rinse with fresh water and wipe dry.

STEP 5:

25% solution of lighter fluid or nail polish remover and water. Rinse with fresh water and wipe dry.



P: 305.477.7900

F: 305.477.9372

E: shorwitz@maincusa.com

Upholstery Materials: *continued ...*

Specifications for ESPRIT, SAVANNA, SOLITAIRE

REGULAR CLEANING AND MAINTENANCE

STEP 1

Dirt
Dust
Grime

HEALTHCARE STEPS 1, 2 & 3

Blood
Urine
Betadine
Disinfectant

OILS STEPS 1 & 2

Organic oils
Petroleum-based oils

DIFFICULT STAINS STEPS 1, 2, 3, 4 & 5

Eye shadow / Mascara
Lipstick

FOOD STEPS 1 & 2

Ketchup
Chocolate
Coffee
Tea
Juice

Crayon
Grease
Mustard
Ink
Permanent Marker
Paint

Resilience SR

Represents the latest Vinyl Protection

Stain Resistance: With proper care, vinyl can be easily cleaned and will guard against stains.

Anti-Microbial & Anti-Bacterial Protection: Inhibits bacterial growth, as well as fungus, mold and mildew spores.

Abrasion Resistance: Provides additional wear properties and surface durability, increasing the life of the material.

Resilience SR is not visible, and does not affect the feel of the material. Resilience SR will resist repeated cleaning and wear.



P: 305.477.7900

F: 305.477.9372

E: shorwitz@maincusa.com

Upholstery Materials: *continued ...*

Specifications for ESPRIT, SAVANNA, SOLITAIRE

ESPRIT



PES-070 Parchment



PES-012 British tan



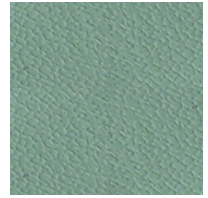
PES-022 Doe



PES-026 Espresso



PES-063 Space Blue

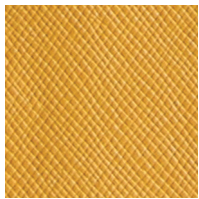


PES-015 Celedon

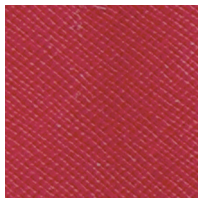
SAVANNA



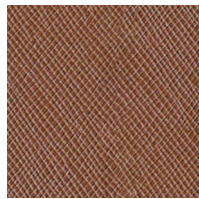
TSA-018 Oat



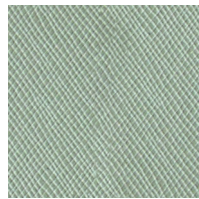
TSA-024 Sunshine



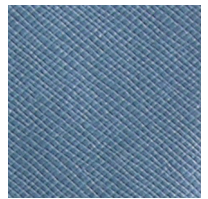
TSA-023 Strawberry



TSA-016 Macaroon

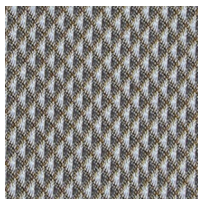


TSA-022 Seafoam

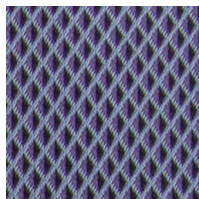


TSA-014 Lake

SOLITAIRE



SSO-019 Stardust



SSO-010 Dahlia



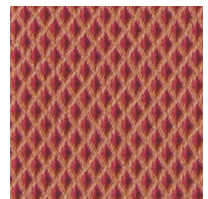
SSO-001 Agave



SSO-013 Honeycomb



SSO-006 Cactus



SSO-020 Strawberry

Contact

Stephen Horwitz
President
Merchandising Associates

P: 305.477.7900

F: 305.477.9372

E: shorwitz@maincusa.com



P: 305.477.7900

F: 305.477.9372

E: shorwitz@maincusa.com